



Restorations that cross generations



EQUIA Forte[®] HT
Bulk fill glass hybrid
restorative system



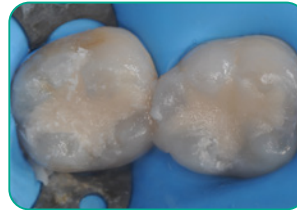
Since 1921
Towards Century of Health

Clinical cases

A strong & biomimetic amalgam alternative

The material can be placed in bulk and is easy to pack & contour. It takes only 3'25" to complete your restorations!*

*Assuming average procedure times following the instructions for use.



Courtesy of Dr. Victor Cedillo Felix, San Diego, CA.

Restoration of a posterior tooth in a high risk caries patient

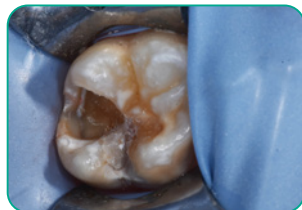
The moisture tolerant adhesion of EQUIA Forte® HT enables easy restoration of deep cavities, even when a rubber dam cannot be placed. The use of sectional matrix will contribute to the longevity of the restorations.



Courtesy of Dr. Z Bilge Kütük, Turkey

Restoration of sensitive, hypomineralized MIH teeth

The chemical adhesion of the material – even to untreated dentine - offers a more sustainable solution in situations where bonding is compromised. The material can be easily placed after partial manual caries removal, making it easier to use in hypersensitive patients or patients having molar incisor hypoplasia (MIH).



Courtesy of Dr. P. Rouas, France

Restorations for all generations

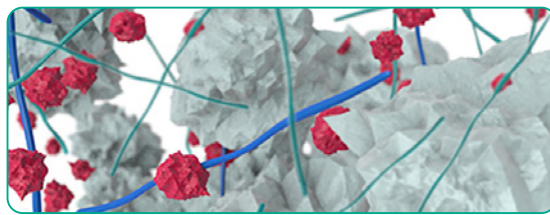
Building on the success of EQUIA Forte®, the new EQUIA Forte® HT is a long-term bulk fill restorative system with enhanced mechanical properties, superior fluoride release, sound marginal seal and excellent handling. This makes EQUIA Forte® HT a versatile and durable restorative solution, ideal for patients of all ages, including pediatric, geriatric and high-risk caries patients.

Glass hybrid technology

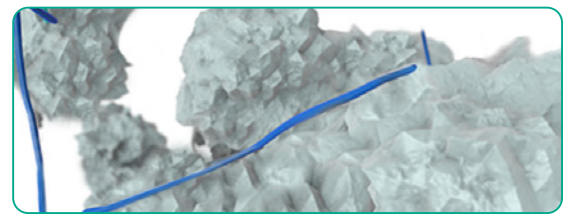
EQUIA® was first launched in 2007, and numerous clinical studies have demonstrated its clinical efficacy in Class I and II restorations* ever since. In 2014, GC's new glass hybrid technology caused further considerable improvements, leading to the development of EQUIA Forte®. This restorative system combined a self-cure, bulk fill restorative, EQUIA Forte® Fil, laminated with a nano-filled, self-adhesive resin coat, EQUIA Forte® Coat. The new glass hybrid innovation was achieved through introduction of ultra-fine highly reactive glass and high-molecular weight polyacrylic acid powders within conventional glass which ensures advanced mechanical properties with improved flow and non-sticky handling. The nano-filled, self-adhesive resin, EQUIA Forte® Coat, ensures optimized marginal seal and wear resistance.

*See technique guide for suggested cavity preparations.

- Surface-treated FAS (Fluoro Aluminosilicate) glass
- Highly reactive surface-treated fine FAS glass
- High-molecular-weight polyacrylic acid
- Polyacrylic acid



EQUIA Forte® Fil and EQUIA Forte® HT Fil
advanced glass hybrid technology



EQUIA® Fil

Taking glass hybrid to the next level

The strength and handling are further improved in EQUIA Forte® HT by developing an intelligent control of distribution and interaction of these glass particles. Also, EQUIA Forte® Coat is now available in an ergonomic flip-top bottle that minimizes waste.

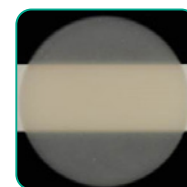
The result? A strong restorative with prolonged working time and superb handling that is excellent for bulk-fill placement, even in load-bearing Class II restorations.*

*See compressive and flexural strength data comparison charts

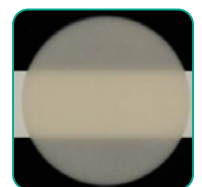


Improved translucency

Pushing the boundaries of glass hybrid technology even further, EQUIA Forte® HT has a perfectly adapted translucency for better looking posterior restorations. The refractive index of the fillers has been adapted to the matrix. As a result, the final restorations look more natural and aesthetic⁷.



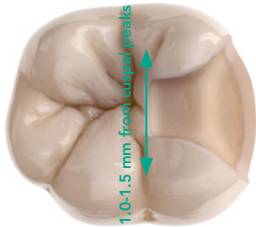
EQUIA Forte®
HT Fil
Shade A2



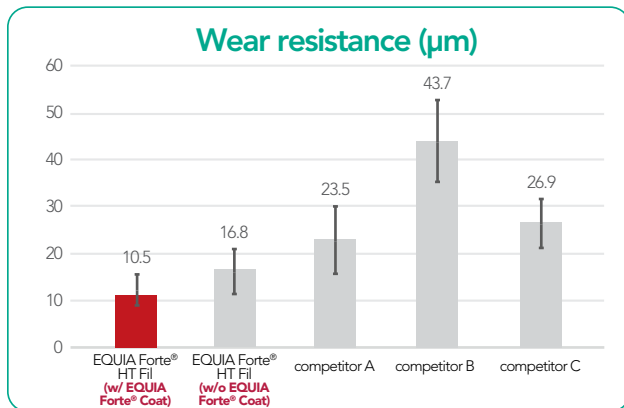
EQUIA Forte® Fil
Shade A2

Strong & durable

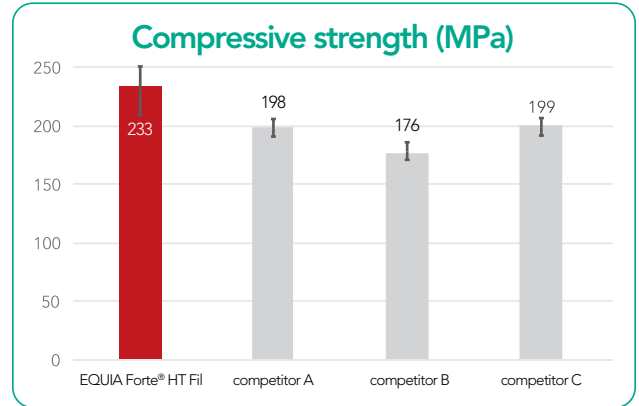
Glass hybrid systems offer the strength of the latest innovative glasses combined with the wear resistance of a filled coating. The unique synergy between the coating and the restorative material improves the durability and wear resistance of the restorations.⁴



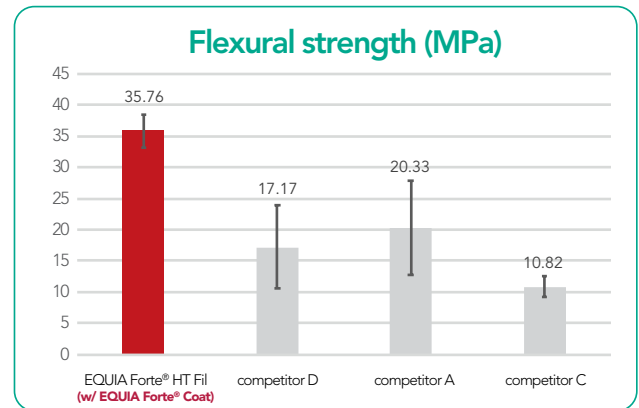
EQUIA Forte® HT is indicated for stress-bearing Class II cavities*.



Source: GC R&D, Japan, 2018. Data on file.



ISO9917-1: 2007. Source: GC R&D, Japan, 2018. Data on file.



Three-point bending test (ISO10477:2004). Source: University of Siena, Italy. Publication in preparation.

Excellent biocompatibility

EQUIA Forte® HT exhibits a strong chemical bond to tooth providing exceptional marginal seal. The isolation is not needed as the bond strength is not compromised even in presence of saliva. Since no etchant is used, there is virtually no post-operative sensitivity. It is not only a tooth-friendly option but also an environment-friendly solution, making it a great choice for amalgam replacement.



Fast & easy placement

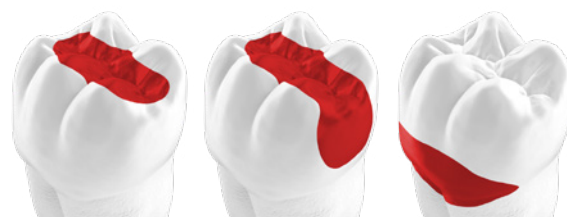
EQUIA Forte® HT has been designed to make your daily restorative work as easy and efficient as possible. Since rubber dam placement and adhesive application are not required, the restoration can be finished quickly. It is a material that is easy to use, yet the longevity is not compromised.



EQUIA Forte® HT, your best partner for posterior restorations



Courtesy of Dr. Z Bilge Kütük, Turkey



Main indications for EQUIA Forte® HT

Long-term proven clinical performance

EQUIA Forte® HT is a reliable system based on 12 years of clinical experience with EQUIA®.

The longevity of posterior EQUIA® restorations has been proven in many independent, long-term clinical studies¹⁻⁵ showing after 6 years a success rate of 100% for Class I restorations²⁻³ and between 92.3% and 98.7% for Class II^{1-3,9}.

- Gurgan *et al.* A randomized controlled 10 years follow up of a glass ionomer restorative material in class I and class II cavities, J Dent. 2019 Jul 25. pii: S0300-5712(19)30157-5.
- Gurgan *et al.* Clinical performance of a glass ionomer restorative system: a 6-year evaluation. Clin Oral Investig. 2017;21(7):2335-2343.
EQUIA® vs. composite
- Türkün *et al.* A Prospective Six-Year Clinical Study Evaluating Reinforced Glass Ionomer Cements with Resin Coating on Posterior Teeth: Quo Vadis? Oper Dent. 2016;41(6):587-598
EQUIA® vs. Riva™ Self Cure†
- Basso *et al.* 7 Years, Multicentre, Clinical Evaluation on 154 Permanent Restorations Made With a Glassionomer-based Restorative System. J Dent Res. 2016;95 Spec Issue B: #0446.
- Klinke T. *et al.* Clinical performance during 48 months of two current glass ionomer restorative systems with coatings: a randomized clinical trial in the field. Trials. 2016;17(1):239. doi: 10.1186/s13063-016-1339-8.
EQUIA® vs. glass ionomer with conventional coating
- Gurgan *et al.* 12-month Clinical-performance of a Glass-hybrid-restorative in Non-carries-cervical-lesions of Patients With Bruxism. J Dent Res. 2018; 97 Spec Issue A: #0235. **EQUIA Forte® vs. composite**
- Shimada *et al.* Evaluation of Mechanical Properties of New GI-restorative (EQUIA Forte® HT). J Dent Res. 2019; 98 Spec Issue A: #3662.
- Y. Hokii *et al.* Fluoride Ion Release/Recharge Behavior of Ion-Releasing Restorative Materials, Dental Materials, Volume 35, Supplement 1, 2019 (Accepted for publication).
- Leal SC. Glass Hybrid Technology in the post amalgam era: Restorative Innovation. J Dent Res. 2019;98 Spec Issue A: abstract number URL, 2019 <https://iadr2019.zerista.com/event/member/580284>, 2019



EQUIA Forte® HT Fil Refill

Contains: 50 EQUIA Forte® HT Capsules
(Powder 0.4g, Liquid: 0.13g (0.10mL) per capsule).
Shades: Assorted, A1, A2, A3, A3.5, B1, B2, B3, C4



EQUIA Forte® Coat Bottle Refill

Contains: One EQUIA Forte®
Coat (4mL) bottle.



CAVITY CONDITIONER (GC)

Contains: One (5.7mL) bottle.



GC CAPSULE APPLIER IV

Contains: One capsule applier.



Since 1921
Towards Century of Health

GC Australasia Dental Pty Ltd
1753 Botany Road Banksmeadow
NSW 2019 Australia

T: +61 2 9301 8200
E: info.australasia@gc.dental
www.gcaustralasia.com